

Section: 1, 12
 Township: 12 South
 Range: 30 East

Lat: 29° 28' 50.45" N (29.480681 dd)
 Long: 81° 14' 6.77" W (-81.235214 dd)

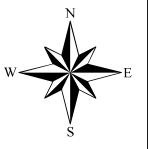
Copyright © 2013 National Geographic Society, i-cubed, Esri, HERE, DeLorme, MapmyIndia, © OpenStreetMap contributors





8711 Perimeter Park Blvd.,
 Suite 1
 Jacksonville, FL 32216
 (904) 285-1397
 mail@ersenvironmental.com

East Hampton at Palm Coast
USGS Topographic
Quadrangle Map
 Flagler County, Florida

Project No.:	16130
Exhibit No.:	1
Date:	1-23-17
Rev. Date:	

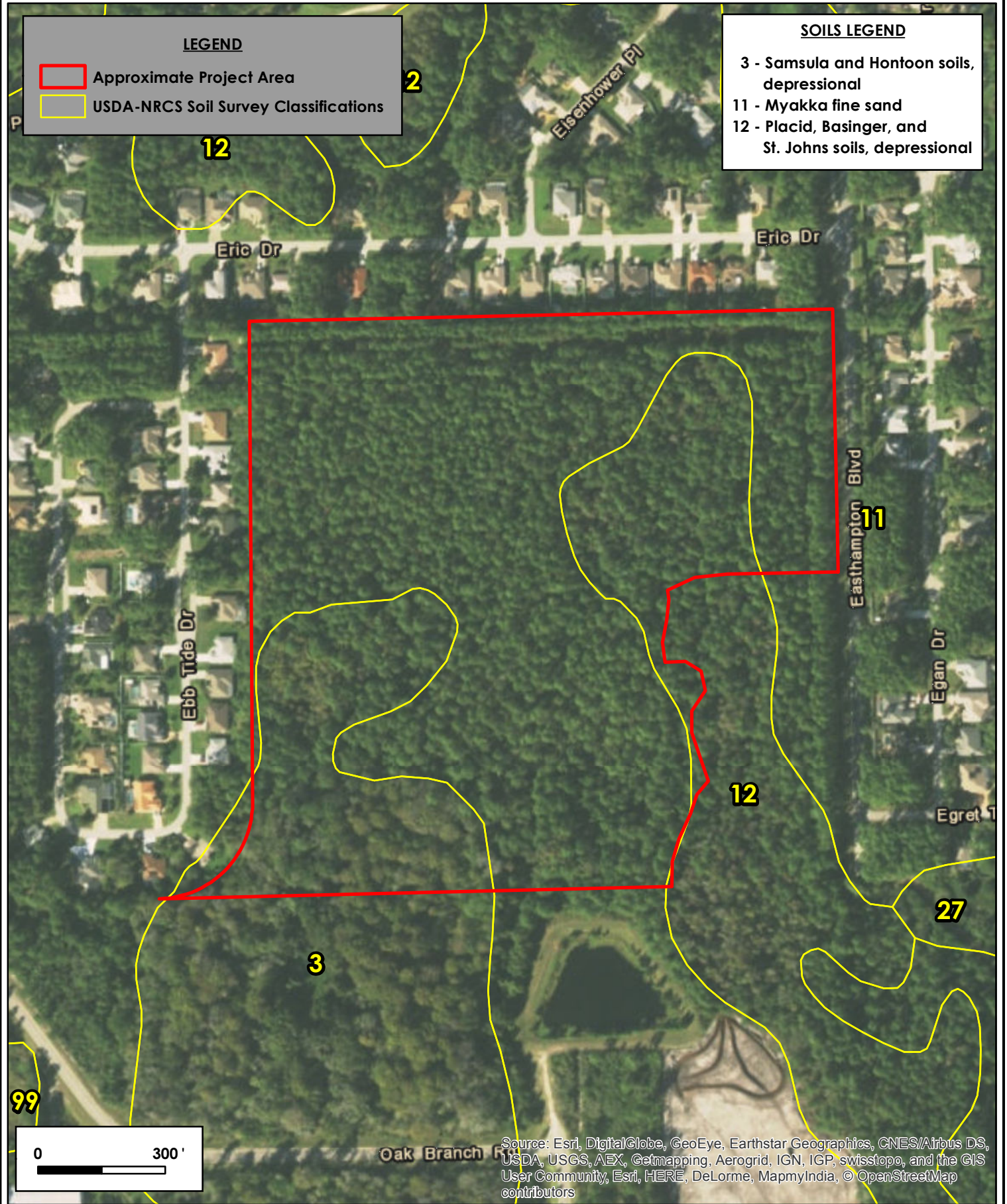


LEGEND



-  Approximate Project Area
-  USDA-NRCS Soil Survey Classifications

SOILS LEGEND

- 3 - Samsula and Hontoon soils, depressional
- 11 - Myakka fine sand
- 12 - Placid, Basinger, and St. Johns soils, depressional

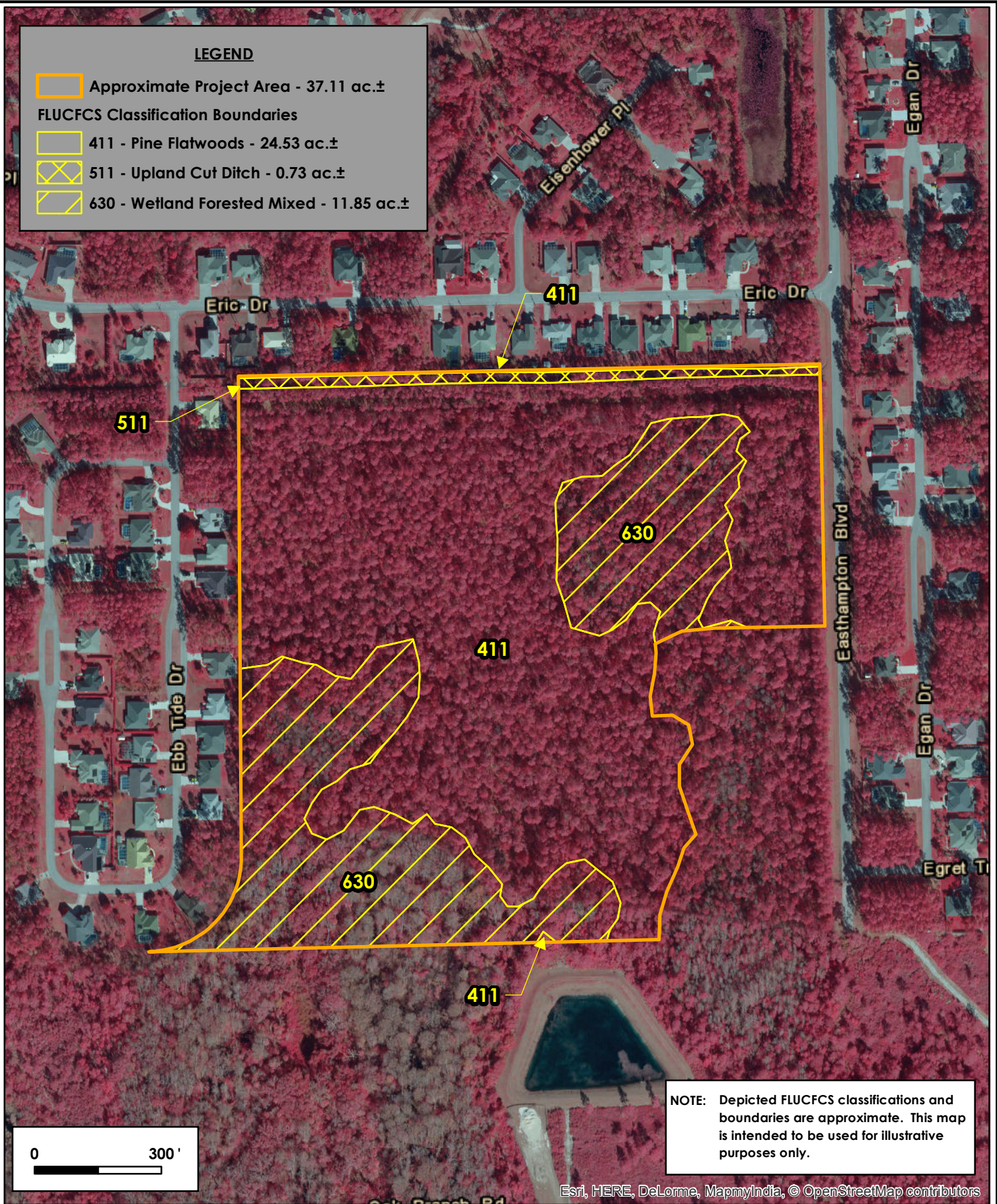


Source: Esri, DigitalGlobe, GeoEye, Earthstar Geographics, CNES/Airbus DS, USDA, USGS, AEX, Getmapping, Aerogrid, IGN, IGP, swisstopo, and the GIS User Community, Esri, HERE, DeLorme, MapmyIndia, © OpenStreetMap contributors

 <p>Environmental Resource Solutions Our Science. Your Success.</p>	<p>8711 Perimeter Park Blvd., Suite 1 Jacksonville, FL 32216 (904) 285-1397 mail@ersenvironmental.com</p>	<p>East Hampton at Palm Coast Soils Map</p>		
		<p>Project No.: 16130</p>		
		<p>Exhibit No.: 2</p>		
		<p>Date: 1-23-17</p>		
		<p>Rev. Date:</p>		

LEGEND

- Approximate Project Area - 37.11 ac.±
- FLUCFCS Classification Boundaries**
- 411 - Pine Flatwoods - 24.53 ac.±
- 511 - Upland Cut Ditch - 0.73 ac.±
- 630 - Wetland Forested Mixed - 11.85 ac.±



NOTE: Depicted FLUCFCS classifications and boundaries are approximate. This map is intended to be used for illustrative purposes only.

Esri, HERE, DeLorme, MapmyIndia, © OpenStreetMap contributors



8711 Perimeter Park Blvd.,
Suite 1
Jacksonville, FL 32216

(904) 285-1397
mail@ersenvironmental.com

**East Hampton at Palm Coast
FLUCFCS Map**

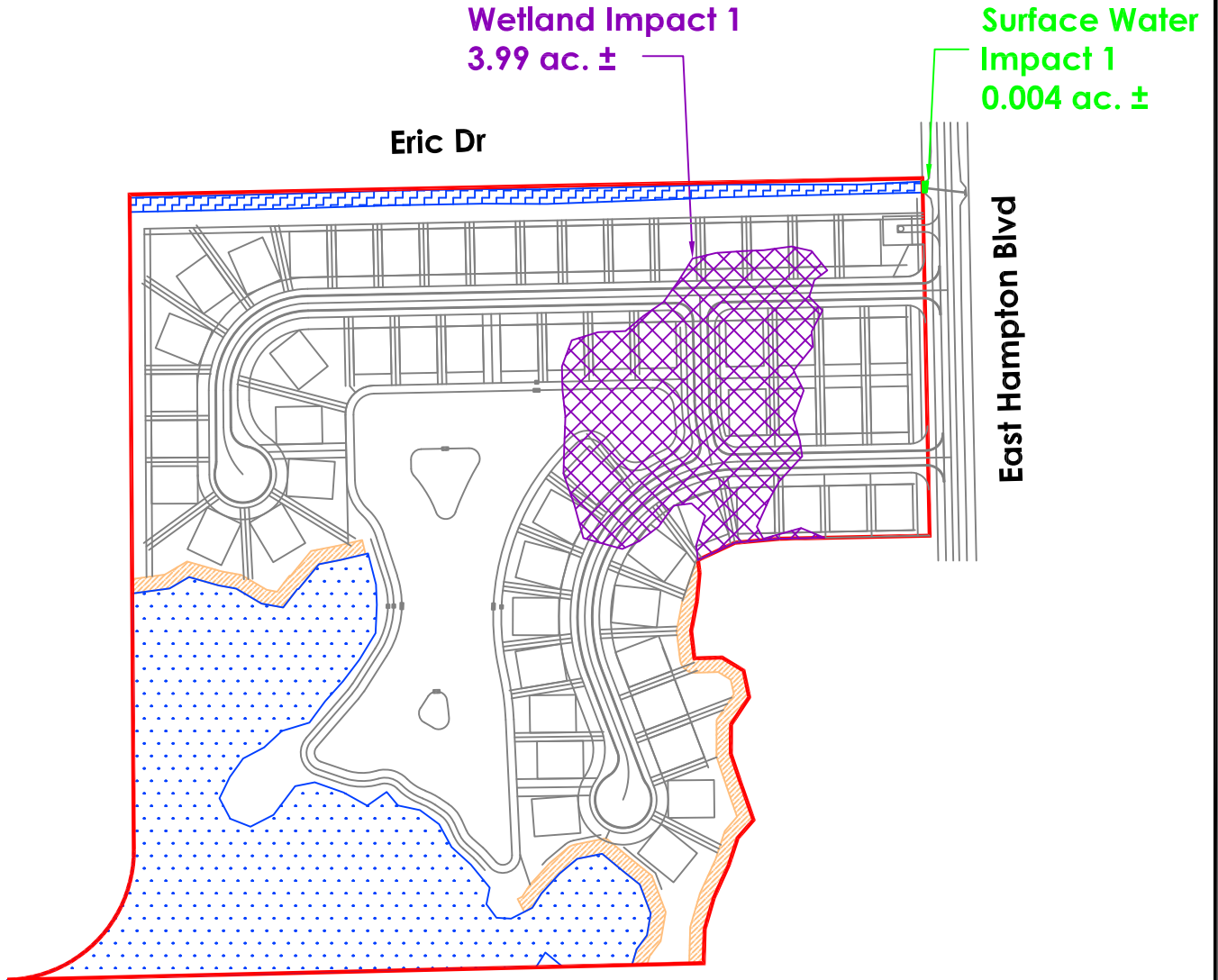
Project No.:	16130
Exhibit No.:	3
Date:	2-8-17
Rev. Date:	

By: NEE



LEGEND

- Approximate Project Area - 37.11 ac. ±
- Proposed Wetland Fill Impact - 3.99 ac. ±
- Proposed Upland Buffer - 0.96 ac. ±
- Proposed Surface Water Impact - 0.004 ac.±
- Wetlands to Remain - 7.86 ac. ±
- Surface Water to Remain - 0.73 ac. ±



Scale: 1"=300'



8711 Perimeter Park Blvd.
Suite 1
Jacksonville, FL 32216
(904) 285-1397
mail@ersenvironmental.com

**East Hampton at Palm Coast
Wetland Impact Map**

Source: England-Thims & Miller, Inc. By: NEE

Project No.:	16130
Exhibit No.:	4
Date:	4-5-17
Rev. Date:	

